

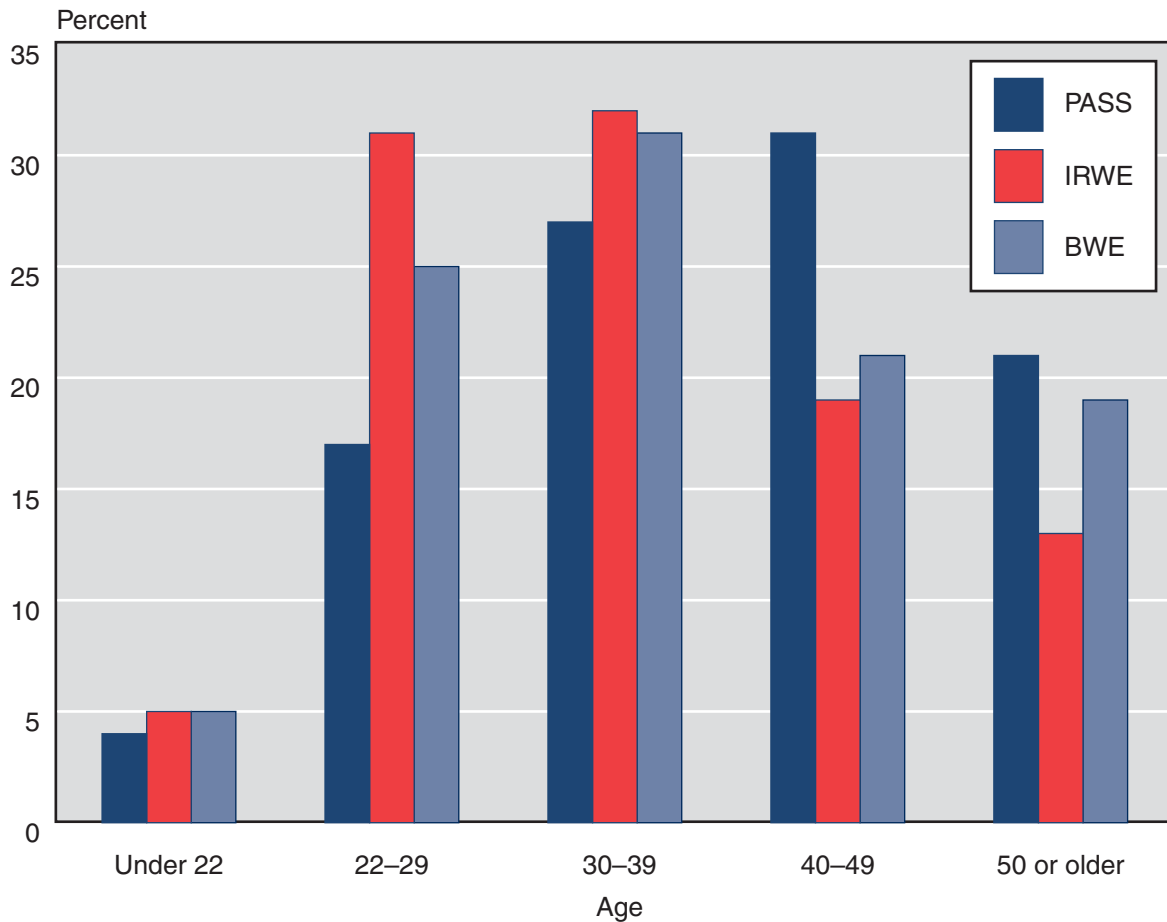
**Other Work  
Incentive Participants**

---

---

**Chart 9.**  
**Percentage distribution, by age and provision, December 2003**

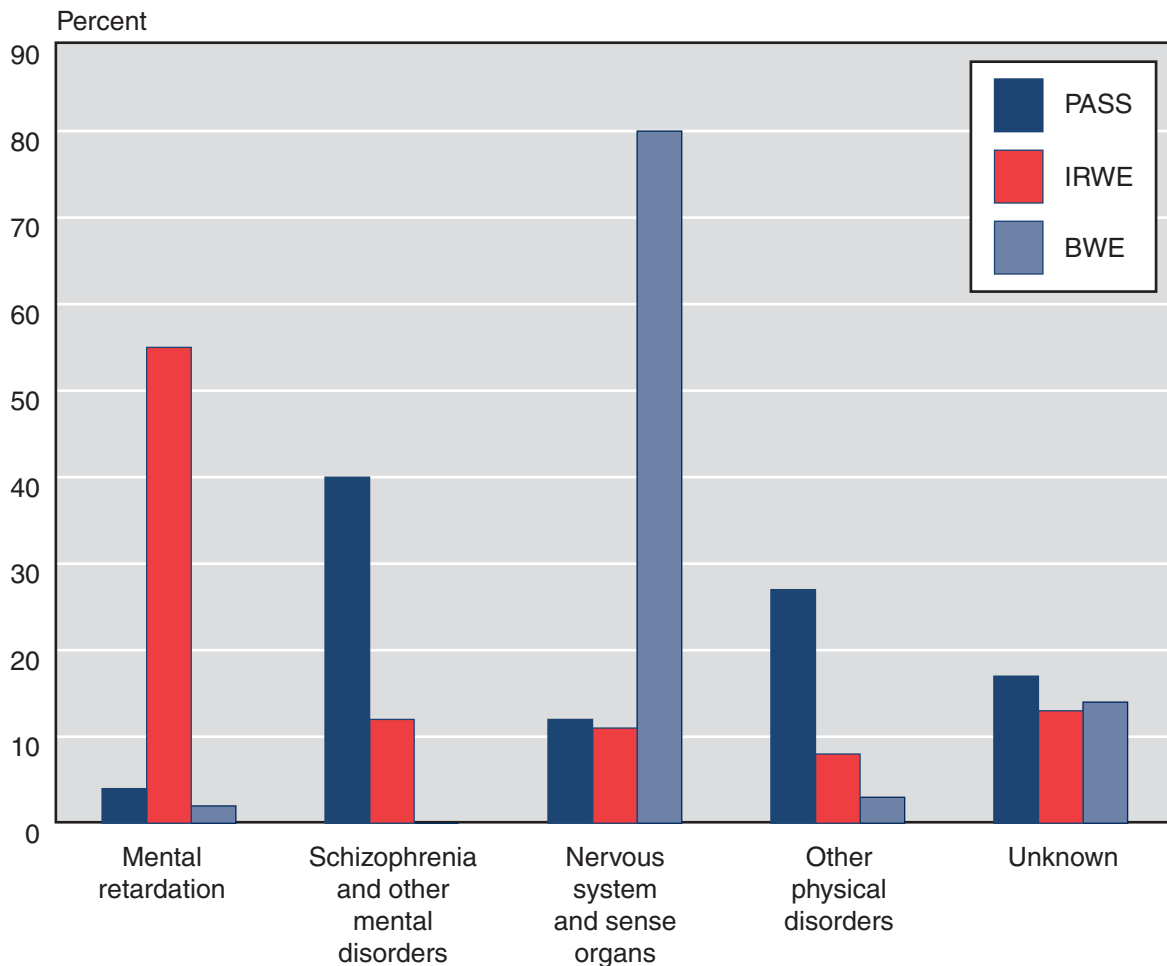
Recipients with income excluded under plans for achieving self-support (PASS), impairment-related work expenses (IRWE), or blind work expenses (BWE) were similar in age to all working recipients (Chart 3). PASS participants were somewhat older—52 percent were aged 40 or older, compared with 32 percent of those with IRWE and 40 percent of those with BWE.



SOURCE: Table 15.

**Chart 10.**  
**Percentage distribution, by diagnostic group and provision, December 2003**

The most frequently identified diagnosis varied among recipients who had income excluded under plans for achieving self-support (PASS), impairment-related work expenses (IRWE), or blind work expenses (BWE). Over half of the recipients who had some income excluded under IRWE were mentally retarded, and 40 percent of those with a PASS had other mental disorders. Four-fifths of those with BWE had a nervous system disorder.



SOURCE: Table 16.

**Table 14.**  
**Number, by state or other area and provision, December 2003**

State or area	Plans for achieving self-support (PASS) <sup>a</sup>	Impairment-related work expenses (IRWE)	Blind work expenses (BWE)
All areas	1,705	7,604	3,074
Alabama	26	167	29
Alaska	4	6	3
Arizona	19	92	32
Arkansas	19	84	31
California	511	719	447
Colorado	11	35	36
Connecticut	9	171	23
Delaware	0	41	9
District of Columbia	b	b	4
Florida	61	357	99
Georgia	28	256	60
Hawaii	9	7	9
Idaho	17	20	9
Illinois	21	283	71
Indiana	6	134	42
Iowa	26	49	73
Kansas	23	308	34
Kentucky	49	108	48
Louisiana	3	136	53
Maine	34	38	16
Maryland	16	200	49
Massachusetts	86	210	260
Michigan	57	191	90
Minnesota	40	162	66
Mississippi	7	40	50
Missouri	17	157	57
Montana	32	10	10
Nebraska	12	31	22
Nevada	9	19	13
New Hampshire	7	30	11
New Jersey	16	205	42
New Mexico	b	80	19
New York	111	609	227
North Carolina	110	361	117
North Dakota	7	11	3
Ohio	38	131	110
Oklahoma	5	80	23
Oregon	24	42	35
Pennsylvania	18	370	145
Rhode Island	8	9	17
South Carolina	11	80	38
South Dakota	14	16	6
Tennessee	15	158	54
Texas	31	333	200
Utah	4	59	21

(Continued)

**Table 14.**  
**Number, by state or other area and provision, December 2003—Continued**

State or area	Plans for achieving self-support (PASS) <sup>a</sup>	Impairment-related work expenses (IRWE)	Blind work expenses (BWE)
Vermont	18	7	6
Virginia	15	555	78
Washington	36	109	58
West Virginia	6	33	22
Wisconsin	54	288	93
Wyoming	b	5	b
Outlying area			
Northern Mariana Islands	0	b	b

SOURCE: Social Security Administration, Supplemental Security Record (Characteristic Extract Record format), 100 percent data.

- a. Includes 448 persons with a PASS that excludes only resources.
- b. Data are not shown to avoid disclosure of information for particular individuals.
- CONTACT: Clark Pickett (410) 965-9016 or ssi.workers@ssa.gov.

**Table 15.**  
**Number, by selected characteristics and provision, December 2003**

Characteristic	Plans for achieving self-support (PASS) <sup>a</sup>	Impairment-related work expenses (IRWE)	Blind work expenses (BWE)
Total	1,705	7,604	3,074
Age			
Under 18	7	4	3
18–21	66	392	143
22–29	284	2,357	761
30–39	455	2,399	953
40–49	535	1,477	633
50–59	296	688	436
60–64	45	163	90
65 or older	17	124	55
Sex			
Male	720	4,130	1,665
Female	985	3,474	1,409
Earned income <sup>b</sup>			
Wages	444	7,539	2,973
Self-employment	86	82	124
Earnings (dollars)			
None	1,181	0	0
65 or less	29	638	213
66–99	11	311	106
100–199	35	1,126	285
200–299	59	1,024	212
300–399	37	874	202
400–499	52	726	174
500–599	42	635	182
600–699	51	463	162
700–799	29	391	116
800–899	35	252	120
900–999	21	208	117
1,000 or more	123	956	1,185
Unearned income <sup>b</sup>			
None	309	3,210	1,570
Social Security	1,333	3,930	1,251
Other pensions	19	59	9
Income based on need	0	1	0
Asset income	121	684	286
Other	81	217	128

SOURCE: Social Security Administration, Supplemental Security Record (Characteristic Extract Record format), 100 percent data.

a. Includes 448 persons with a PASS that excludes only resources.

b. The sum of the entries may be greater than the total because some recipients may receive more than one type of earned or unearned income or both earned and unearned income.

CONTACT: Clark Pickett (410) 965-9016 or ssi.workers@ssa.gov.

**Table 16.**  
**Percentage distribution, by diagnostic group and provision, December 2003**

Diagnostic group	All blind and disabled recipients	Plans for achieving self-support (PASS) <sup>a</sup>	Impairment-related work expenses (IRWE)	Blind work expenses (BWE)
Total				
Number	3,953,224	1,705	7,604	3,074
Percent	100.0	100.0	100.0	100.0
Congenital anomalies	0.6	0.8	1.7	1.1
Endocrine, nutritional, and metabolic diseases	3.9	2.6	0.4	0.4
Infectious and parasitic diseases	1.7	2.4	0.6	0.1
Injuries	2.6	7.7	2.2	0.1
Mental disorders				
Retardation	22.0	4.2	55.1	2.0
Schizophrenia	10.0	10.0	3.9	0
Other	24.3	29.6	8.5	0.3
Neoplasms	1.1	0.9	0.3	0.1
Diseases of the—				
Blood and blood-forming organs	0.4	0.3	0.1	0
Circulatory system	4.7	1.3	0.7	1.2
Digestive system	0.9	0.8	0.1	0
Genitourinary system	1.1	1.0	0.2	0.1
Musculoskeletal system and connective tissue	9.7	7.6	1.0	0.1
Nervous system and sense organs <sup>b</sup>	7.8	12.1	11.4	80.3
Respiratory system	2.1	1.2	0.2	0
Skin and subcutaneous tissue	0.2	0.2	0	0
Other	0.2	0.1	0.2	0.2
Unknown	6.9	17.4	13.4	14.1

SOURCE: Social Security Administration, Supplemental Security Record (Characteristic Extract Record format), 100 percent data.

NOTE: Effective with the December 2002 edition, all recipients in each recipient category are included when computing percentages for each diagnostic category. Previously, only recipients with identified diagnoses were included in this computation.

- a. Includes 448 persons with a PASS that excludes only resources.
- b. Most disabled recipients classified as blind are included in this category. A few blind recipients with a primary impairment other than diseases of the eye are coded in other categories. Also, a few recipients are classified with diseases of the eye, but their impairment does not meet the definition of blindness.

CONTACT: Clark Pickett (410) 965-9016 or ssi.workers@ssa.gov.

**Table 17.**  
**Percentage distribution of persons with income excluded, by amount excluded and provision,**  
**December 2003**

Amount excluded (dollars)	Plans for achieving self-support (PASS) <sup>a</sup>	Impairment-related work expenses (IRWE)	Blind work expenses (BWE)
Total			
Number	1,257	7,604	3,074
Percent	100.0	100.0	100.0
Under 25	2.7	18.9	17.9
25–49	1.0	25.4	10.2
50–99	2.3	32.2	14.3
100–199	5.6	15.6	18.4
200–299	9.6	3.9	11.8
300–499	23.5	2.5	14.1
500–999	47.7	1.2	10.1
1,000 or more	7.6	0.3	3.2

SOURCE: Social Security Administration, Supplemental Security Record (Characteristic Extract Record format), 100 percent data.

a. Data do not include plans for achieving self-support that exclude only resources.

CONTACT: Clark Pickett (410) 965-9016 or ssi.workers@ssa.gov.